

TRUCK AND BUS RADIAL



PRODUCT RANGE

RADAR[®]
TYRES

INDEX

INTRODUCTION	2
APPLICATION CHART	2




PRODUCT RANGE

REGIONAL STEER	
R/F-01	3
REGIONAL DRIVE	
R/D-01	4
REGIONAL TRAILER	
R/T-01	5

INTRODUCTION

Radar Tyres is a design-driven brand, offering safety, performance and sustainability for all. Our mission is to make vehicle ownership accessible to all, by offering fitments with a unique combination of technology and sustainability, designed and engineered without compromise. Our truck tyres deliver a unique combination of high mileage and well balanced driving characteristics. We know the long distances drivers often need to cover, tight deadlines, unexpected and demanding situations on and off the road. That's why it is essential to have a reliable partner who helps you face the daily challenges with confidence. Radar Tyres is the embodiment of quality and technological innovation by Omni United.

APPLICATION CHART

	STEER	DRIVE	TRAILER
REGIONAL	 R/F-01	 R/D-01	 R/T-01

R/F-01



OUTSTANDING TRACTION ON HIGHWAYS AND EVEN WEAR

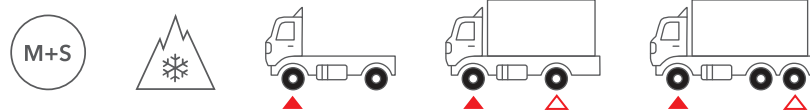
- Miniature sipes on groove edge combined with square shoulder profile

IMPROVED AQUAPLANING RESISTANCE AND HANDLING PERFORMANCE

- Wide longitudinal grooves

INCREASED PROTECTION OF TYRE CONSTRUCTION

- Stone-ejector-technology reduces the lodging and drilling of stones into the tread

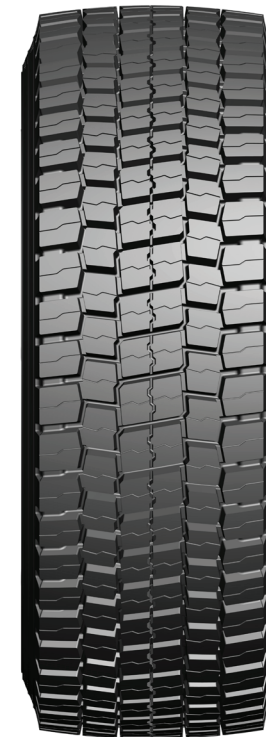


EU REGULATION 2020/740 LABEL GRADES

RIM	SIZE	L/I/S.R	LR/PLY RATING				
22.5	315/70R22.5	156/150 L	J/18-PLY	C	A	B 74DB	✓
22.5	315/80R22.5	156/150 L (154/150 M)	L/20-PLY	C	A	B 74DB	✓

L/I/SR – LOAD INDEX/SPEED RATING, L.R. – LOAD RANGE, ▲ – PRIMARY APPLICATION, △ – SECONDARY APPLICATION, (M+S) – MUD AND SNOW, – 3 PEAK MOUNTAIN SNOWFLAKE, – FUEL EFFICIENCY, – WET GRIP, – NOISE

R/D-01



IMPROVED STABILITY AND EVEN WEAR

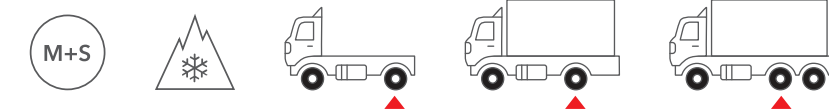
- Tie-bars between tread blocks

HIGH MILEAGE AND DURABILITY

- Wide tread blocks combined with high tread depth

IMPROVED AQUAPLANING RESISTANCE AND EXCELLENT TRACTION

- Deep grooves with high-density transverse design



EU REGULATION 2020/740 LABEL GRADES

RIM	SIZE	L/I/S.R	LR/PLY RATING				
22.5	315/70R22.5	154/150 L	J/18-PLY	D	A	A 73DB	✓
22.5	315/80R22.5	156/150 L (154/150 M)	L/20-PLY	D	A	A 73DB	✓

L/I/SR – LOAD INDEX/SPEED RATING, L.R. – LOAD RANGE, ▲ – PRIMARY APPLICATION, △ – SECONDARY APPLICATION, (M+S) – MUD AND SNOW, – 3 PEAK MOUNTAIN SNOWFLAKE, – FUEL EFFICIENCY, – WET GRIP, – NOISE

R/T-01



INCREASED AQUAPLANING RESISTANCE AND EXCELLENT WET AND DRY GRIP

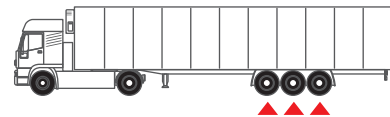
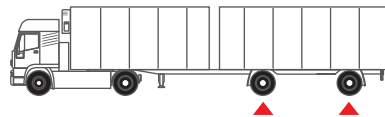
- 4 longitudinal zig-zag grooves

IMPROVED STABILITY AND EVEN WEAR

- Wide shoulder design combined with a wide contact patch

IMPROVED FUEL EFFICIENCY

- Continuous tread pattern design with siping that reduces heat build up and lowers rolling resistance



EU REGULATION 2020/740 LABEL GRADES

RIM	SIZE	LI/S.R	LR/PLY RATING				
22.5	385/55R22.5	160 K	L/20-PLY	C	A	B 74DB	✓
22.5	385/65R22.5	164 K	L/20-PLY	C	A	B 74DB	✓

LI/SR – LOAD INDEX/SPEED RATING, LR – LOAD RANGE, ▲ – PRIMARY APPLICATION, △ – SECONDARY APPLICATION, (M+S) – MUD AND SNOW, – 3 PEAK MOUNTAIN SNOWFLAKE, – FUEL EFFICIENCY, – WET GRIP, – NOISE



Omni United (S) Pte Ltd

www.omni-united.com | info@omni-united.com